

# CARTRIDGE COUNTER BALANCE VALVE

## FEATURES :

- Counterbalance valves with pilot assist are meant to control an overrunning load
- Can be installed directly into a cavity machined in an actuator housing for added protection and improved stiffness in the circuit.



Model: CCB-60-\*-10

## SPECIFICATION :

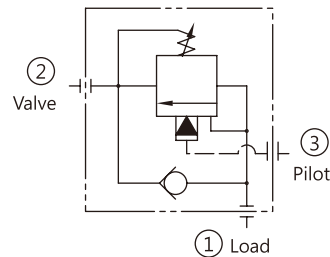
Model	CCB-60	CCBE-120
Max. Flow Rate	60 L/Min	120 L/Min
Fits Standard Cavity	T-11A	T-2A
Tightening Torque	45~50 Nm	60~65 Nm
Area Ratio	3 / 1 = 3	
Max. Limited Pressure	420 bar {6000 PSI}	
Max. Operating Pressure	340 bar {4850 PSI}	
Hydraulic Fluid Temperature	-15°C~+70°C	
Approx. Weight	0.23 kg	0.33 kg

## ORDERING CODE :

CCB- 60 - B - 10

1 2 3 4

## GRAPHIC SYMBOLS :



### 1 CARTRIDGE COUNTER BALANCE VALVE

CCB: Flow Rate at 60 L/Min    CCBE: Flow Rate at 120 L/Min

### 2 MAX. FLOW RATE

### 3 PRESSURE ADJ. RANGE

H : 70~280 Bar (general type, cracking pressure 1.8 Bar)

I : 30~105 Bar (general type, cracking pressure 1.8 Bar)

A : 70~280 Bar (anti-pitting corrosion type, cracking pressure 0.3 Bar)

B : 30~105 Bar (anti-pitting corrosion type, cracking pressure 0.3 Bar)

### 4 DESIGN NUMBER

10: With handle

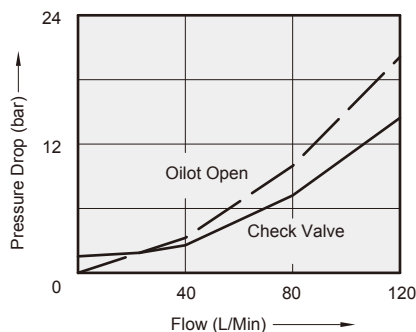
20: Without handle

## PERFORMANCE CURVES:

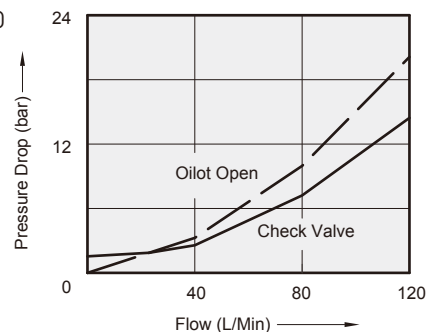
Viscosity of Hydraulic Fluid: 32 mm<sup>2</sup>/s

### REGULATED PRESSURE v.s. FLOW

■ CCB-60



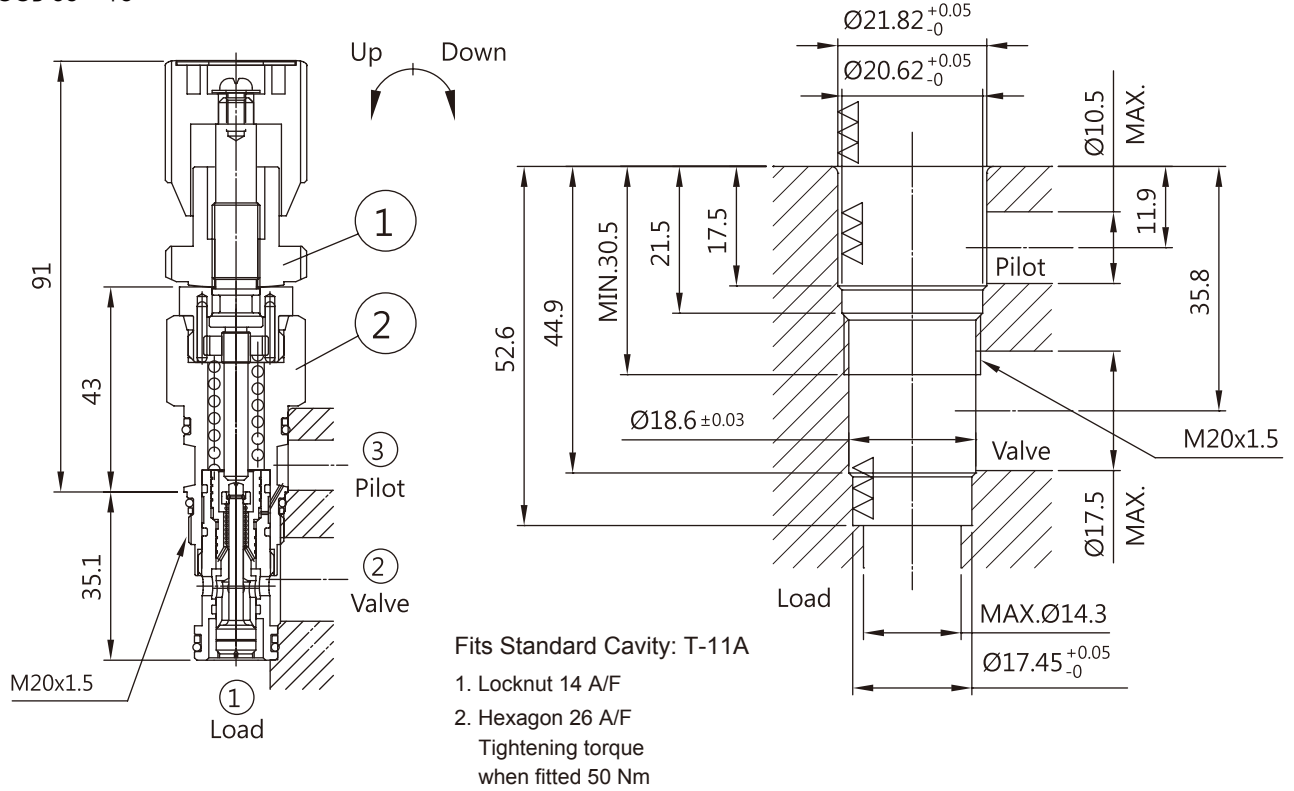
■ CCBE-120



# CARTRIDGE COUNTER BALANCE VALVE

## DIMENSIONS :

■ CCB-60-\*-10



■ CCBE-120-\*-10

