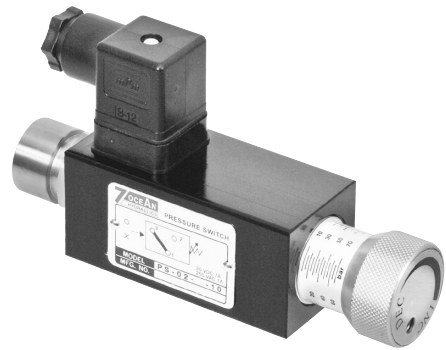


PRESSURE SWITCH

FEATURES :

- Rugged, Compact Design
- Convenient Setpoint Adjustment
- Plug-in Electrical Connections



Model: PS-02-1-10

SPECIFICATION :

Model	PS-02
Maximum Operating Pressure	300 Bar (4350 PSI)
Check Valve Cracking Pressure	1: 5~70 Bar
	2: 20~150 Bar
	3: 40~230 Bar
Ambient Temperature Range	-20°C~+50°C
Hydraulic Fluid Temperature	-20°C~+70°C
Viscosity Range	15~400 mm ² /S
Hydraulic Oil	ISO VG32, 46, 68
Fluid Cleanliness	25 μm
Weight	0.57 kg

ORDERING CODE :

PS - 02 - 1 - 10
1 **2** **3** **4**

1 PRESSURE SWITCH

2 NOMINAL SIZE

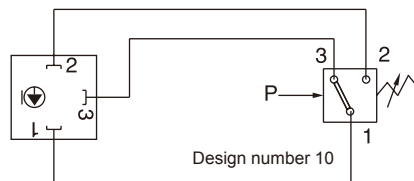
3 PRESSURE ADJ. RANGE

- 1: 5~70 Bar
- 2: 20~150 Bar
- 3: 40~230 Bar

4 DESIGN NUMBER

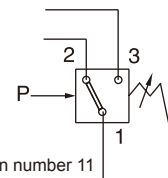
- 10: Standard type
- 11: Opposite to pipe type

HYDRAULIC CONFIGURATION:



Connection:
 NCC:clamp 1-3
 NOC:clamp 1-2

Max. Switching Capacity :
 250VAC/7A,30VDC/7A



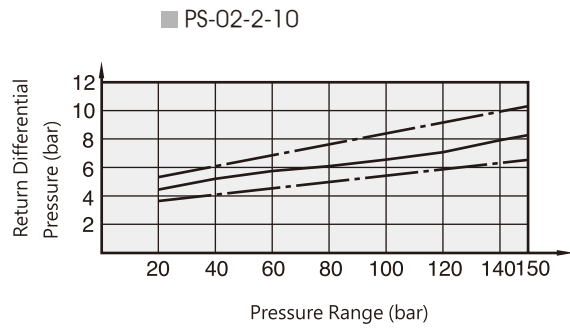
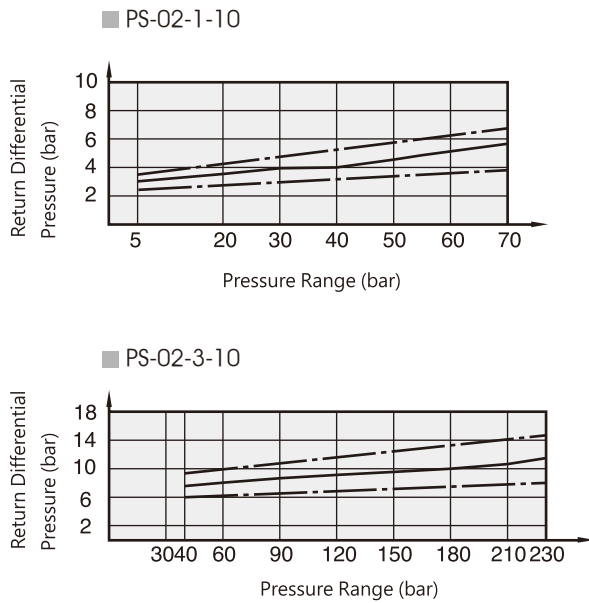
CONNECTING :

Code	10	11
Normally Closed	1-3	1-2
Normally Open	1-2	1-3

PRESSURE SWITCH

PERFORMANCE CURVES:

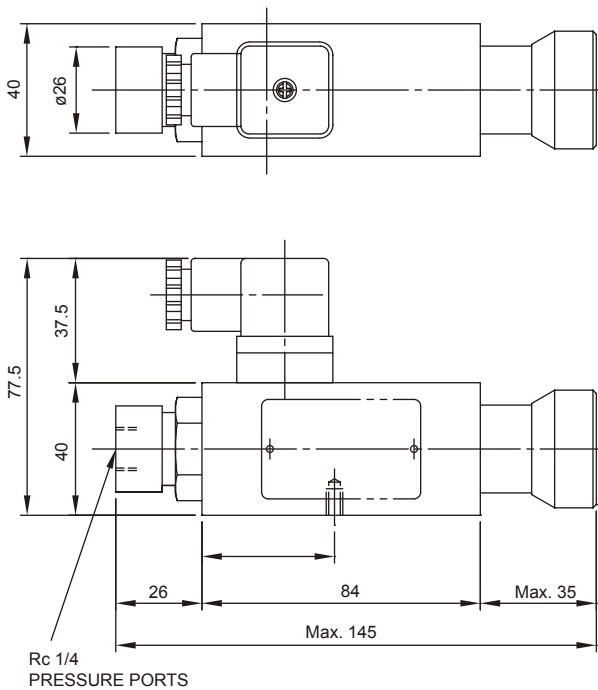
Pressure Switch Range



— Average value
 - - - Localization of scatter

DIMENSION:

■ PS-02-*-10



CROSS SECTION DRAWING :

■ PS-02-*-10

