

**PRESSURE RELIEF VALVE**  
SANDWICH PLATE DESIGN MRV02 SIZE 6

FEATURES :

- Highest performance in NG 6
- Double stage pressure relief valves with balanced poppet
- Sandwich plate design
- 5 pressure ranges
- 4 optional effective directions of flow
- With one or two pressure relief cartridges
- Connections to DIN, ISO and CETOP

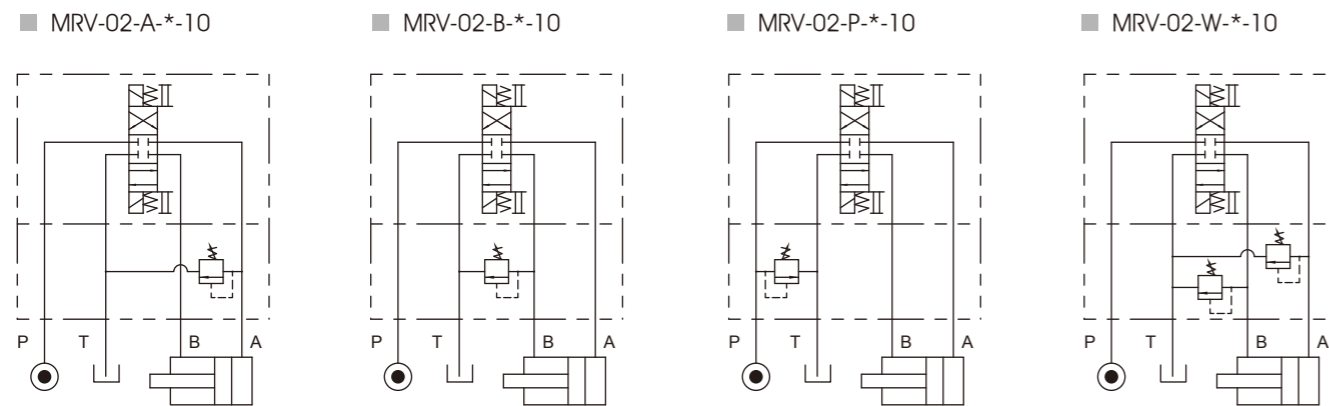


Model: MRV-02-P-1-10

SPECIFICATION :

Maximum Flow Rate	50 l/Min (13.2 GPM)	
Maximum working pressure	320 Bar (4570 PSI)	
Pressure Adjusting Range (Bar)	0:	7~35
	1:	7~70
	2:	7~140
	3:	7~210
Ambient Temperature Range	-20°C~+50°C	
Hydraulic Fluid Temperature Range	-20°C~+70°C	
Viscosity Range	15~400 mm <sup>2</sup> /S	
Hydraulic Oil	ISO VG32, 46, 68	
Fluid Cleanliness	25 μm	
Mounting Pattern	ISO 4401-AB-03-4-A	
Weight	P Type	1.5 kg
	W Type	2.3 kg
	A Type	1.6 kg
	B Type	1.6 kg

HYDRAULIC CONFIGURATION:



**PRESSURE RELIEF VALVE**  
SANDWICH PLATE DESIGN MRV02 SIZE 6

ORDERING CODE :

M RV - 02 - P - 1 - 10 - \*\*  
1 2 3 4 5 6 7

1 SANDWICH PLATE DESIGN

2 PRESSURE RELIEF VALVE

3 NOMINAL VALVE SIZE:

NG 6, CETOP 3 and ISO 4401-03 (NPPA-D03/DIN 24340)

4 CONFIGURATION

- P : Single; acting on port P, discharge to port T
- W : Double; acting on ports A and B, discharge to port T
- A : Single; acting on port A, discharge to port T
- B : Single; acting on port B, discharge to port T

5 PRESSURE ADJUSTING RANGE:

- 0: 7~35 Bar
- 1: 7~70 Bar
- 2: 7~140 Bar
- 3: 7~210 Bar

6 DESIGN NUMBER

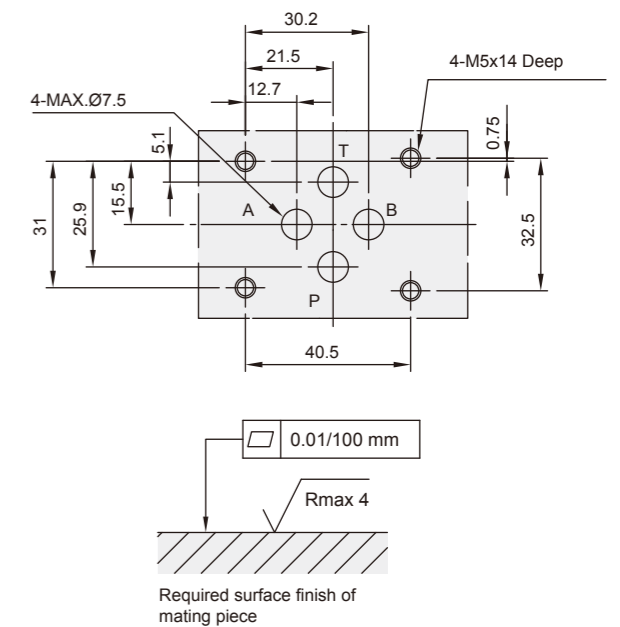
- 10: With handle
- 20: Without handle

7 OPTIONAL INQUIRY

- Q : Direct operated pressure relief valves
- A : Setting Screw on A port

INSTALLATION DIMENSIONS:

(Machined valve mounting face with position of ports)

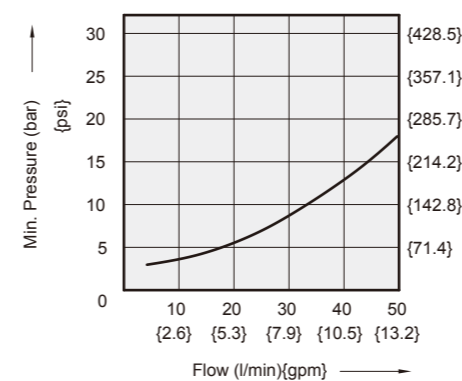


PERFORMANCE CURVES:

Viscosity of Hydraulic Fluid: 32 mm<sup>2</sup>/s

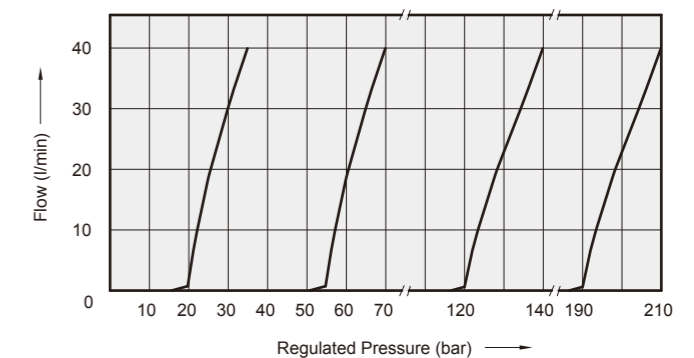
Minimum Pressure

■ MRV-02-\*-1-10



Regulaed Pressure Versus Flow Diagram

■ MRV-02-\*-1-10



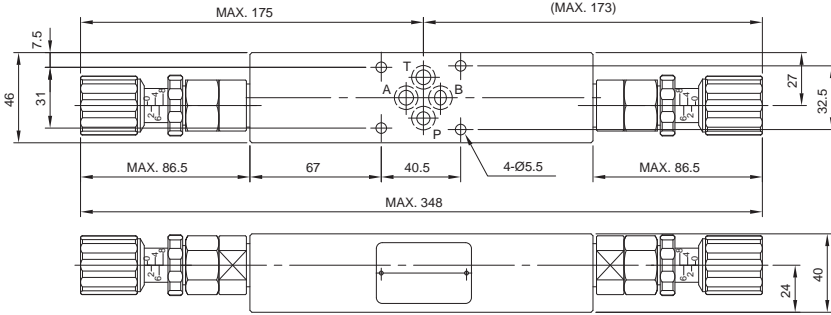
## PRESSURE RELIEF VALVE

### SANDWICH PLATE DESIGN MRV02 SIZE 6

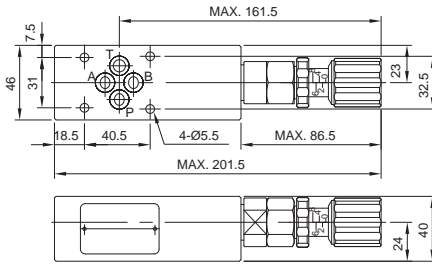
DIMENSIONS :

■ MRV-02-W-\*-10

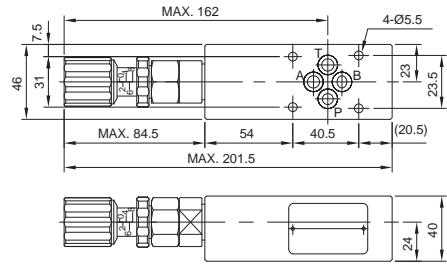
3rd angle projection



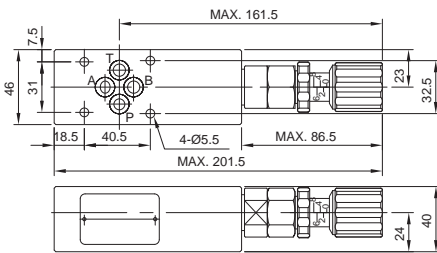
■ MRV-02-P-\*-10



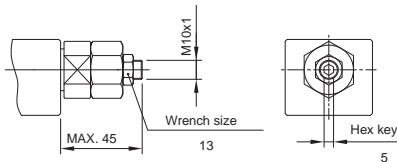
■ MRV-02-A-\*-10



■ MRV-02-B-\*-10

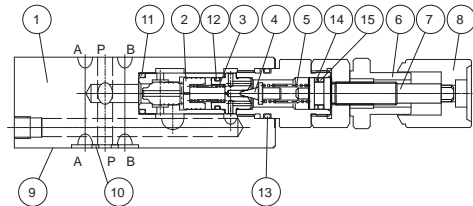


■ MRV-02-\*-\*-20



### CROSS SECTION DRAWING :

■ MRV-02-P-\*-10



1. Body
2. Balanced poppet
3. Balanced poppet spring
4. Pilot valve poppet
5. Adjustment spring
6. Locking nut
7. Setting screw
8. Adjustment element
9. Connections to DIN 24340 from A6; valve fixing screws M5 DIN 912-10.9 tightening torque 8~9 Nm
10. O-ring 1B-P9 for ports A,B,P and T
11. O-ring 1B-P14
12. O-ring 1B-AS013
14. O-ring 1A-P10A
15. O-ring BU-P10A